

Status of E-Call project in the Czech Republic

Antonín Kmoch, Telematix a.s.
project manager of OBU development

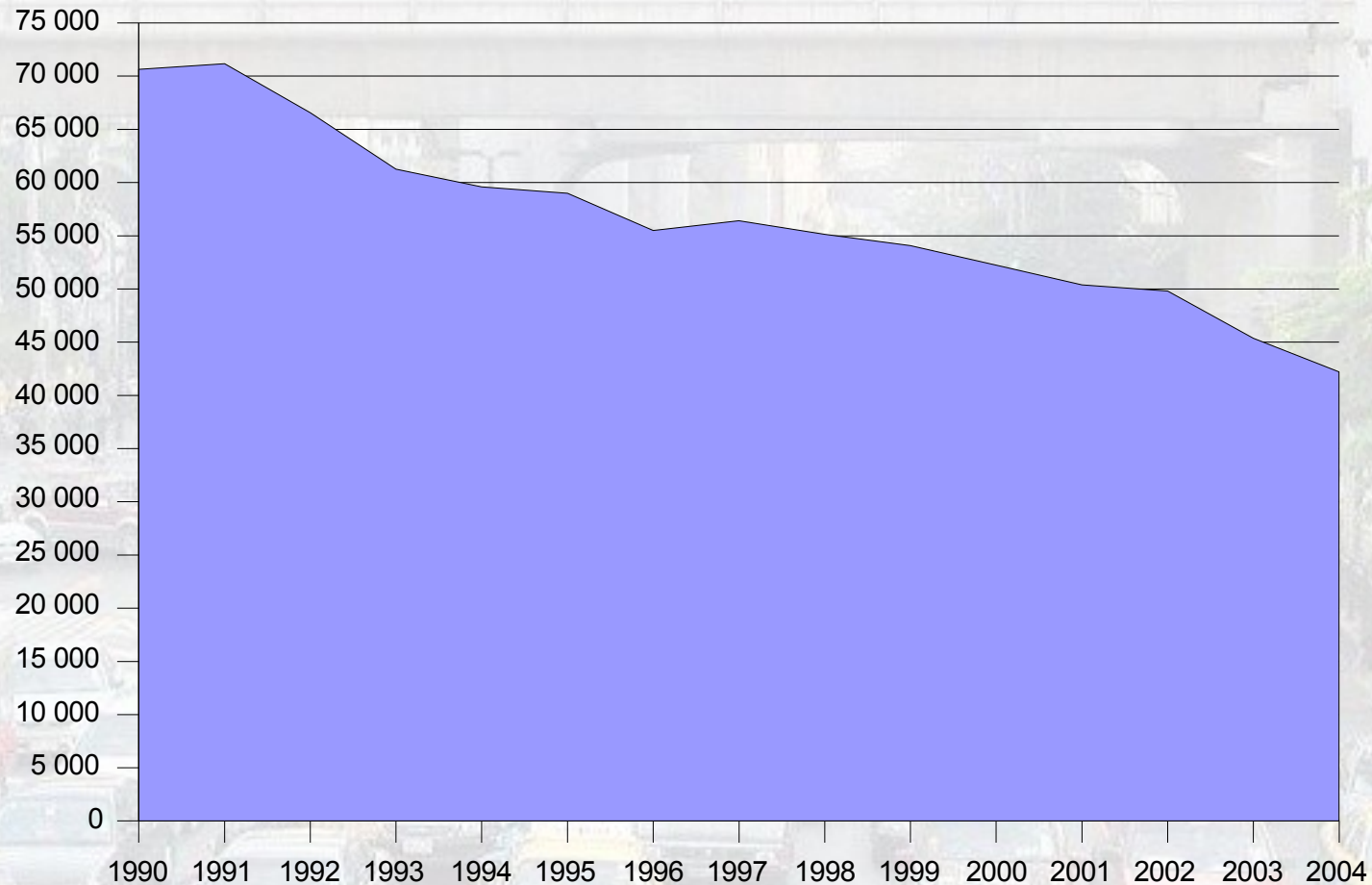


- Population of more than 10 millions
- 3 958 708 private cars
- Average age of these cars is 13.82 years



Number of road fatalities in EU25

Number of people being killed
in Europe is decreasing

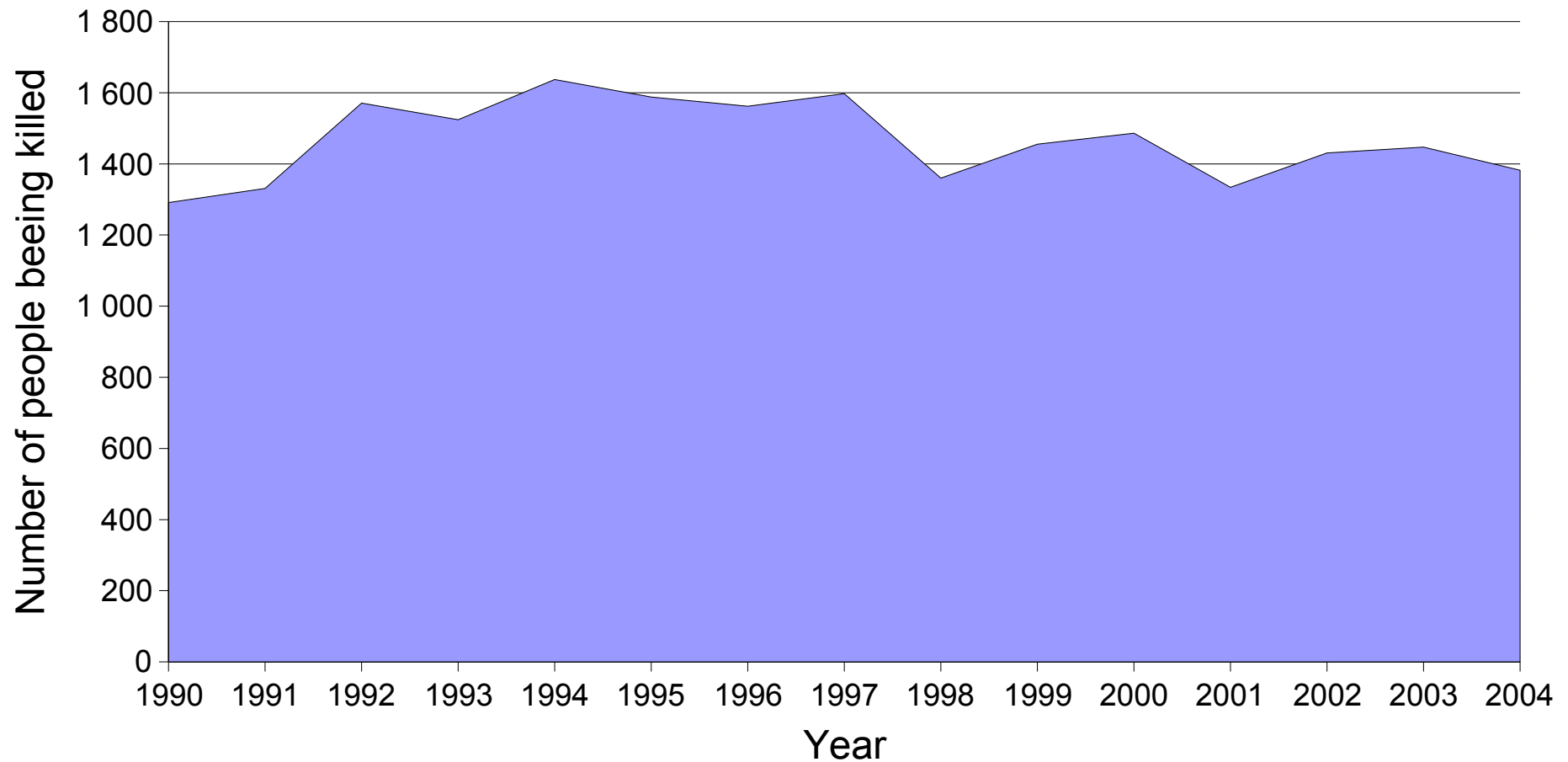


Source: http://europa.eu.int/comm/dgs/energy_transport/figures/pocketbook/2005_en.htm



Number of fatalities in the Czech r.

Number of people being killed in CZ

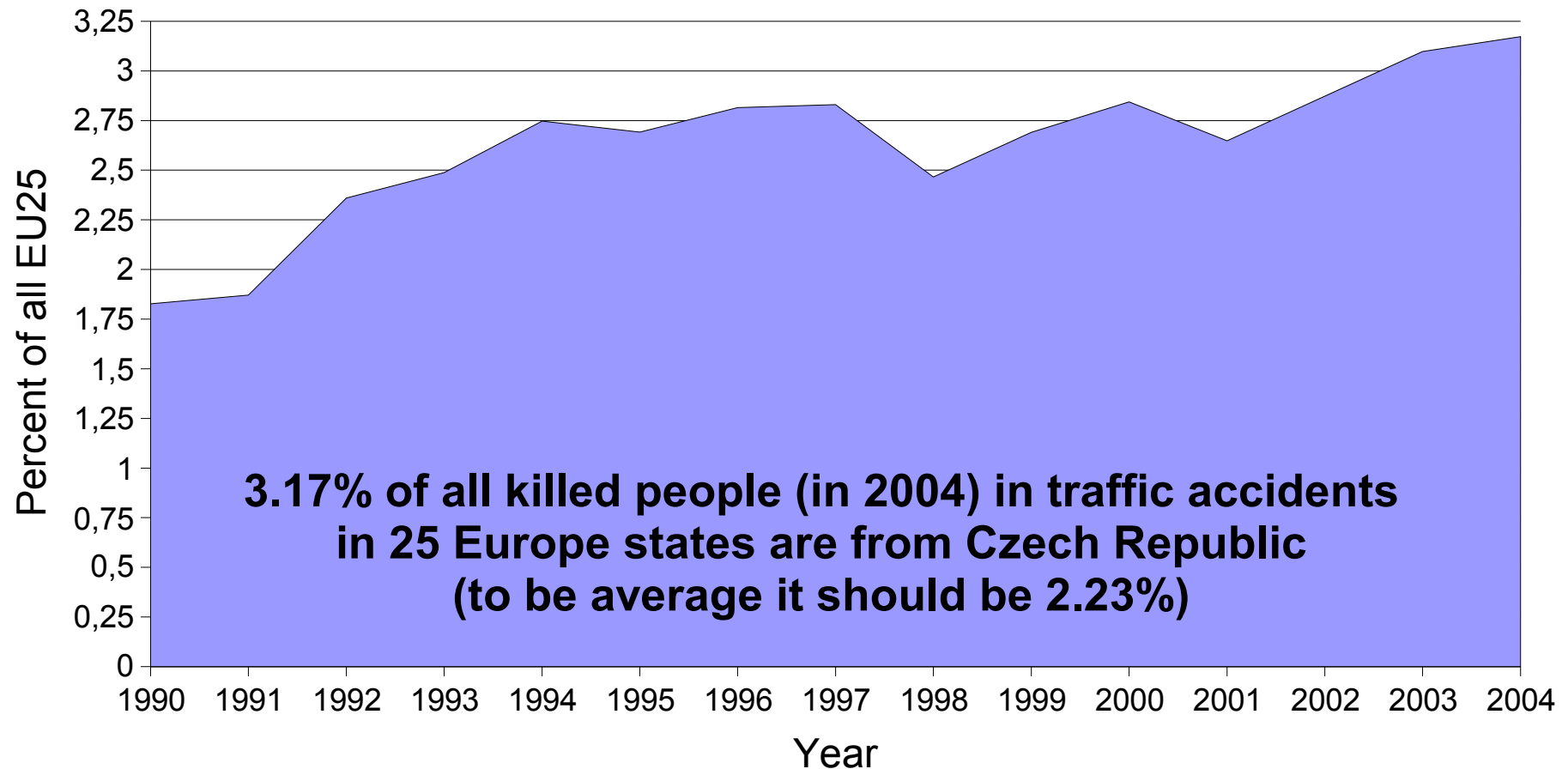


Source: http://europa.eu.int/comm/dgs/energy_transport/figures/pocketbook/2005_en.htm



Number of fatalities in the Czech r.

People killed in CZ vs. in EU25



Source: http://europa.eu.int/comm/dgs/energy_transport/figures/pocketbook/2005_en.htm



Current traffic safety status

- *National Road Safety Strategy of the Czech Republic (2004-2010)* desires to reduce number of fatalities to the half in following 4 years
- Every 3 minutes police is informed about an accident
- Every 18 minutes someone is softly injured in traffic accident, every 108 minutes someone is badly injured
- In 2004 there were 17 175 accidents where the deliquent escaped
- More official data available at: <http://www.cdv.cz/roценка2004/>

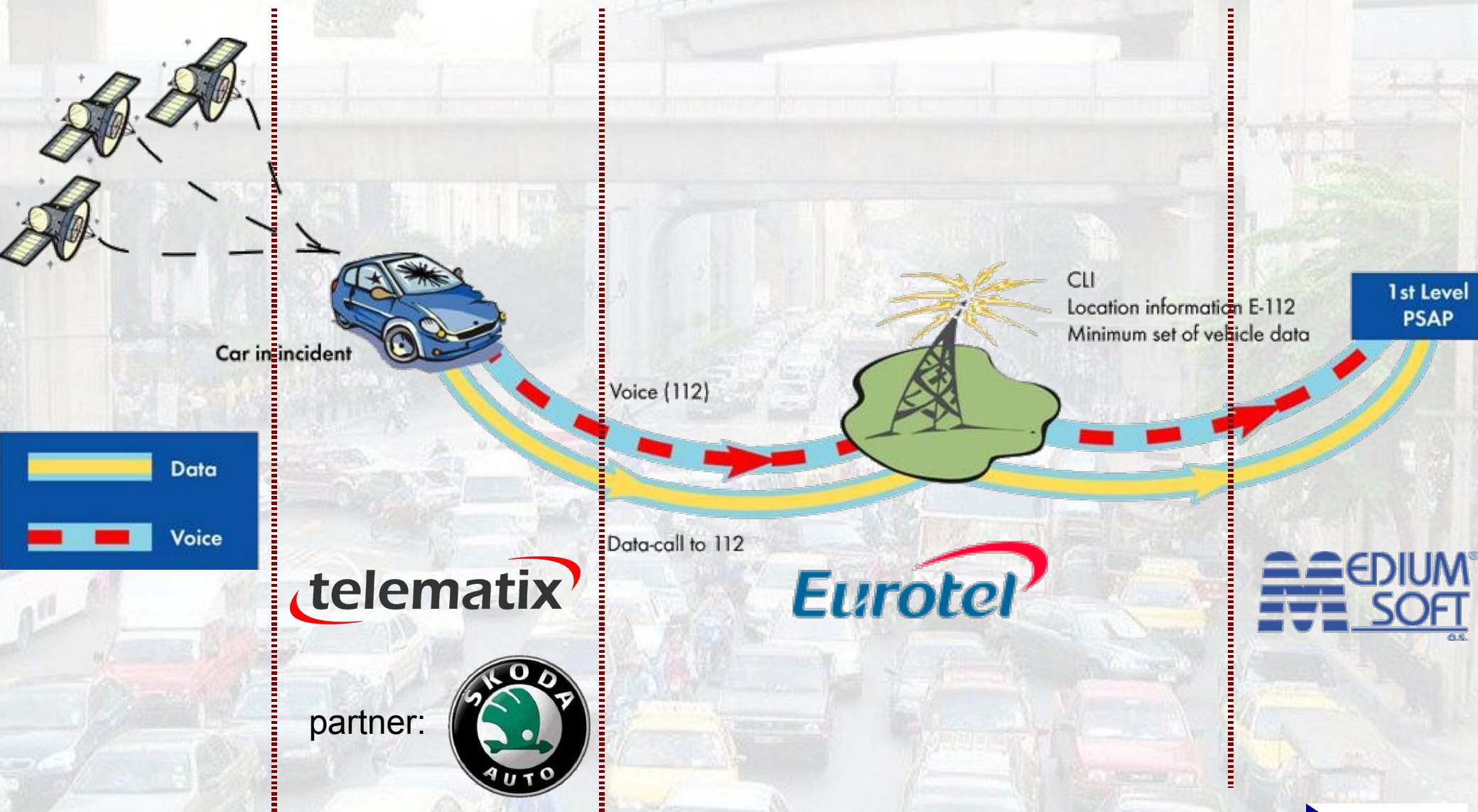


E-Call establishment in CZ

- National E-Call project was launched by Ministry of Transport and Fire Rescue Services of the Czech Republic (Ministry of Interior)
- Contract for Project signed on December 1st, 2005
- Project team leader is Czech Telecom, a.s.
- Other companies (project members) are responsible for following specific tasks (*described on next slide*)



Czech E-Call members



telematix

Eurotel

**EDIUM
SOFT
s.r.o.**

partner:



telematix

Antonín Kmoch [kmoch@telematix.cz]
eCall Expert Meeting (23rd March 2006)

<http://www.telematix.cz/download/ecall/budapest.pdf>



Project schedule

- ETSI decision is considered as important suggestion for problem solving:
 - Transport technology; MSD
 - Systems cooperation inside Europe
- At the beginning of March 2006 decided to continue in areas independent from ETSI decision
- Rough schedule:
 - **Analysis:** now – May06, **Implementation:** May06 – January07, then 2 months **testing**



OBU (on-board-unit) progress *telematix*

- Defining software and hardware requirements
- Negotiation with several units manufacturers and also planning to develop own unit (cooperation with Faculty of Transportation Sciences at Czech Technical University in Prague)
- Cooperation with Škoda Auto in e.g. development of reading CAN bus and negotiating final crash-tests
- MSD will contain identifier of dangerous load if transported



Mobile environment analysis



- There are 3 available GSM networks in CZ:
 - Eurotel, Vodafone, T-Mobile (all ~100% coverage)
- Analysis of possible transport technologies over GSM networks
 - Based on study of Czech Technical University USSD (and UUS *if implemented*) seems to be the best in case of being situated in area of GSM coverage of the same operator as the SIM card is from
 - Among Czech operators only roaming of DTMF is possible (**so this technology will be probably selected**)
- New toll-free number for testing purposes was created



PSAP modification



- One PSAP in Czech republic located in Ostrava



PSAP modification



- Currently showing position on map provided by GSM triangulation (not accurate)
- Updating user interface, so also the WGS position from MSD will be shown to PSAP operator and he/she may decide which one is correct
- Whole content of MSD will be displayed
- FSD/SP will not be implemented on this contract, e.g. because PSAP is not connected to internet for security reasons



Thank you for your attention!

